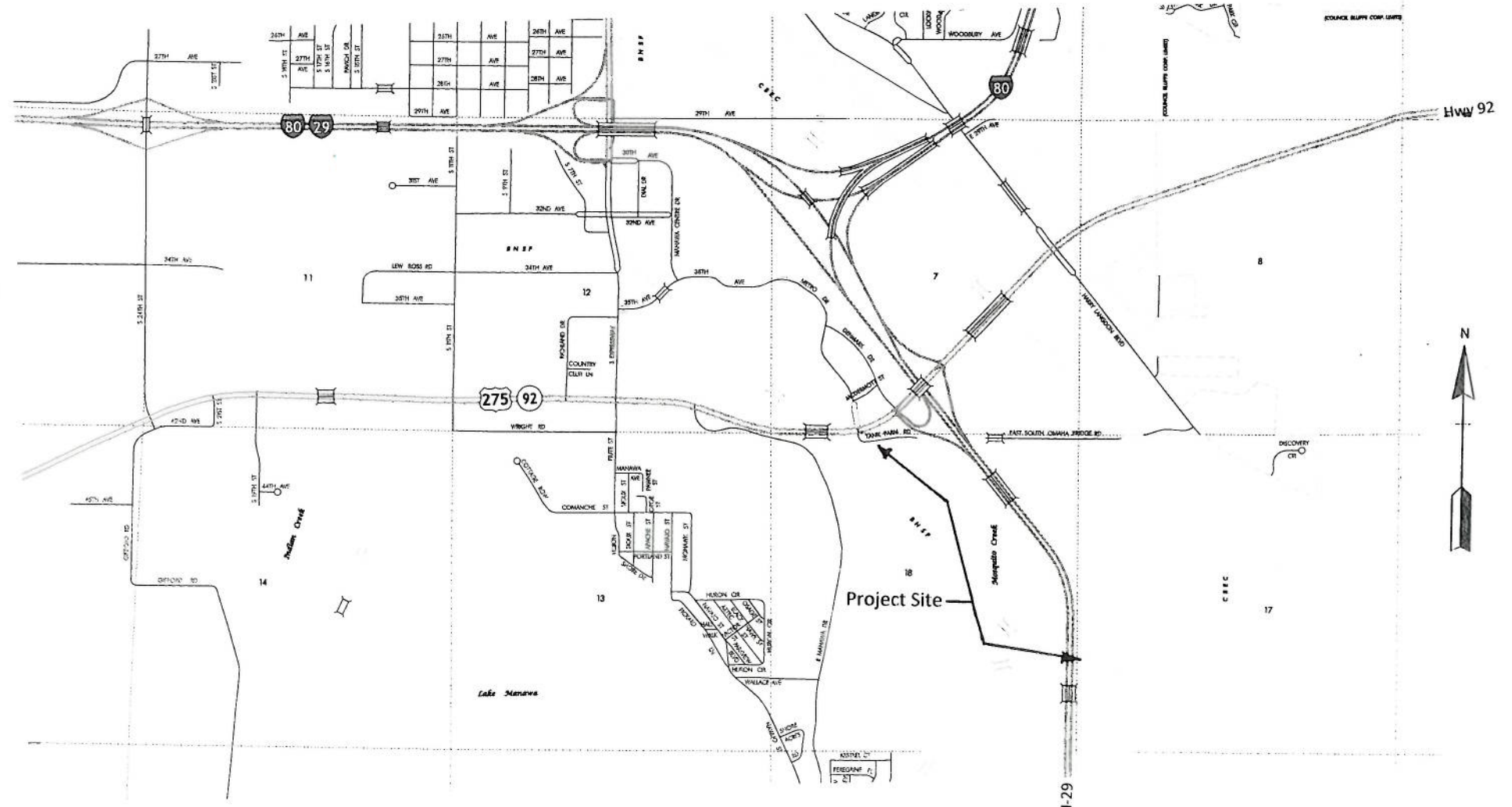


Iowa Communications Network  
*Sharing Iowa's Infinite Possibilities™*

IOWA TELECOMMUNICATIONS AND TECHNOLOGY COMMISSION

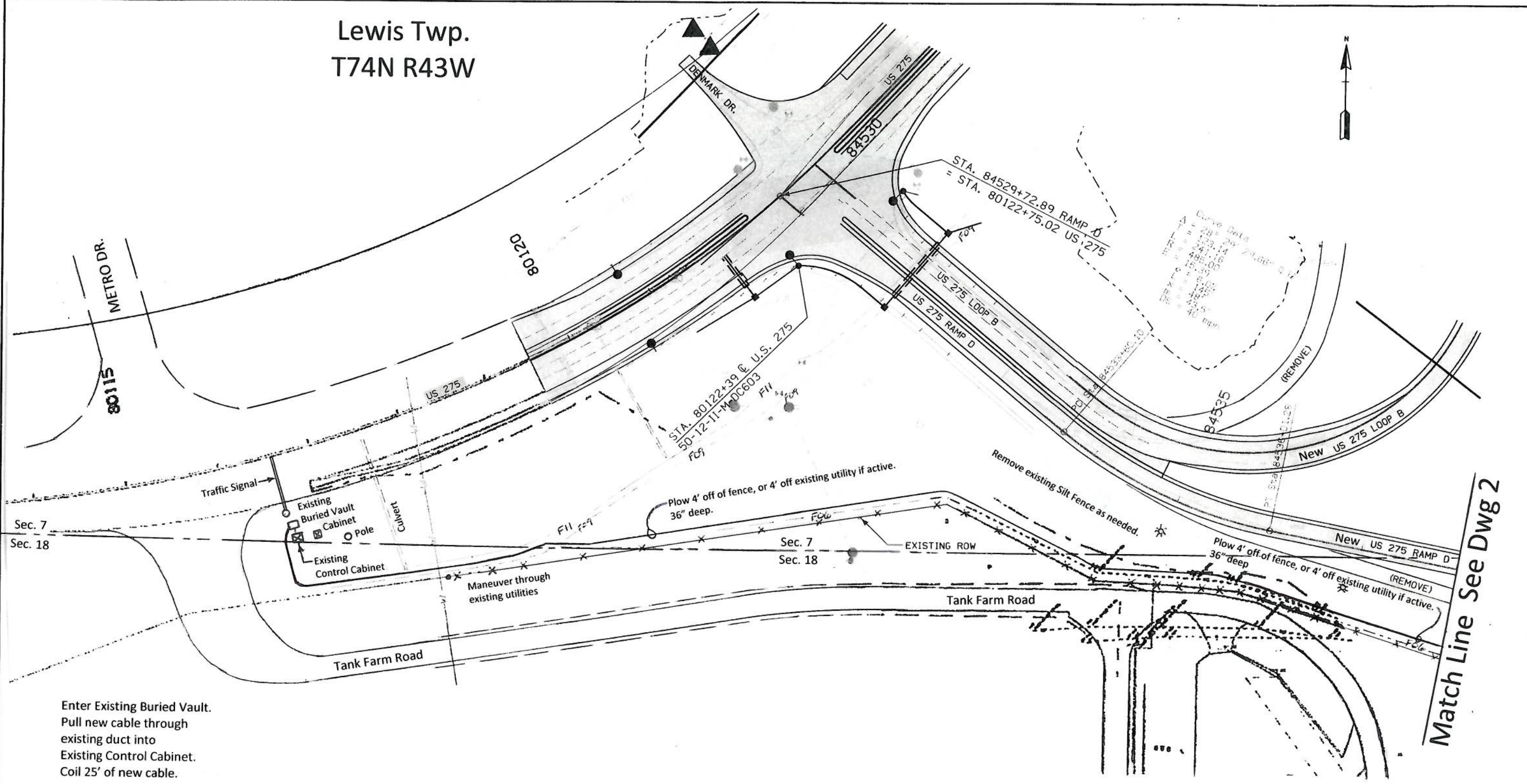
Pottawattamie County  
I-29 Relocation  
Council Bluffs, IA

ICN Project #78120301



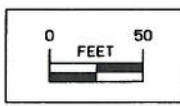


Lewis Twp.  
T74N R43W



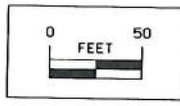
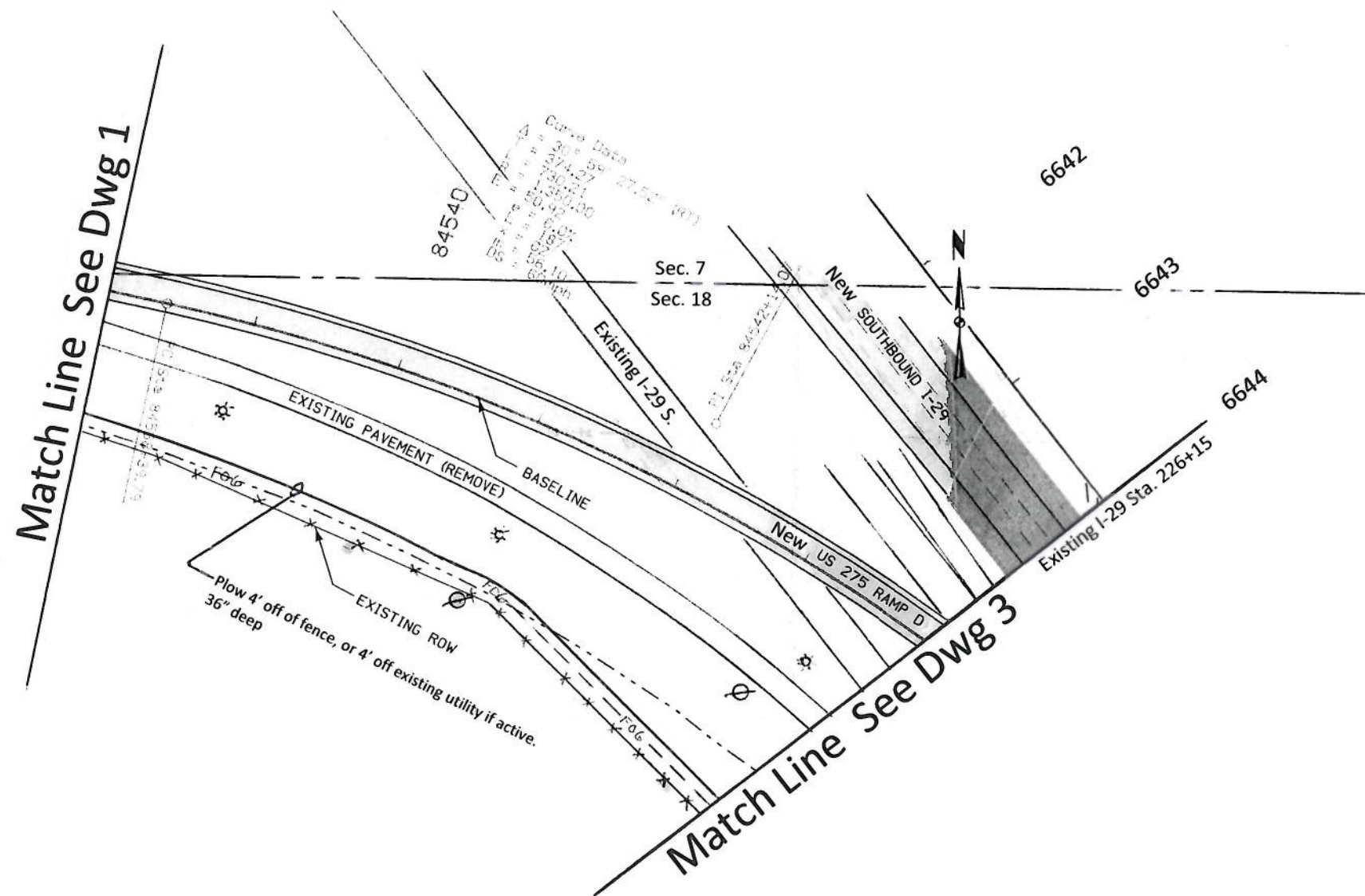
Match Line See Dwg 2

Enter Existing Buried Vault.  
Pull new cable through  
existing duct into  
Existing Control Cabinet.  
Coil 25' of new cable.



<b>IOWA COMMUNICATIONS NETWORK</b>		THIS DRAWING IS PROVIDED FOR GENERAL INFORMATION ONLY AND IS NOT TO BE USED TO DETERMINE PRECISE ION PLACEMENT. CALL ONE CALL BEFORE EXCAVATION (1-800-292-8999)	
400 EAST 14TH STREET, GRIMES STATE OFFICE BUILDING, DES MOINES, IOWA 50319		ICN © 2012 COPY WITH PERMISSION	
1	PERMIT	4-23-12	SCALE: _____ SIZE: _____
2			
3			
4			
5			
6			
7			
8			
			<b>I-29 Relocation Council Bluffs</b>
			DWG 1

Lewis Twp.  
T74N R43W



<b>IOWA COMMUNICATIONS NETWORK</b>		THIS DRAWING IS PROVIDED FOR GENERAL INFORMATION ONLY AND IS NOT TO BE USED TO DETERMINE PRECISE ICN PLACEMENT. CALL ONE CALL BEFORE EXCAVATION (1-800-292-8989)		
400 EAST 14TH STREET, GRIMES STATE OFFICE BUILDING, DES MOINES, IOWA 50319		ICN © 2012 COPY WITH PERMISSION		
1	PERMIT	4-23-12	SCALE:	SIZE:
2				
3				
4				
5				
6				
7				
8				
			<b>I-29 Relocation Council Bluffs</b>	
			DWG	2

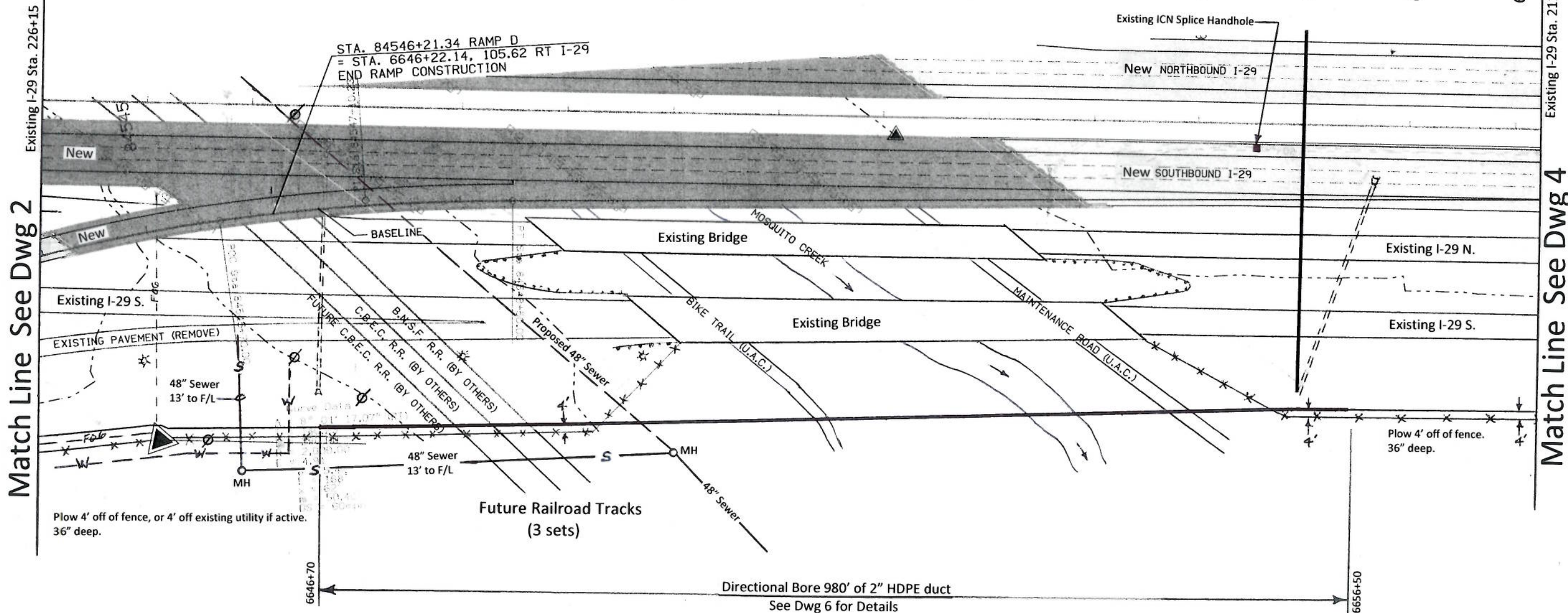


Lewis Twp.  
T74N R43W

Sec 18

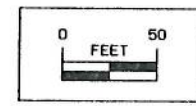


6644 6645 6646 6647 6648 6649 6650 6651 6652 6653 6654 6655 6656 6657 6658



Match Line See Dwg 2

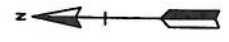
Match Line See Dwg 4



<b>IOWA COMMUNICATIONS NETWORK</b> <small>400 EAST 14TH STREET, GRIMES STATE OFFICE BUILDING, DES MOINES, IOWA 50319          ICN © 2012 COPY WITH PERMISSION</small>		<small>THIS DRAWING IS PROVIDED FOR GENERAL INFORMATION ONLY AND IS NOT TO BE USED TO DETERMINE PRECISE ICN PLACEMENT. CALL ONE CALL BEFORE EXCAVATION (1-800-292-8989)</small>	
1	PERMIT	4-23-12	SCALE:
2	DWG REVISED	5-21-12	SIZE:
3			<b>I-29 Relocation Council Bluffs</b>
4			
5			
6			
7			
8			DWG 3

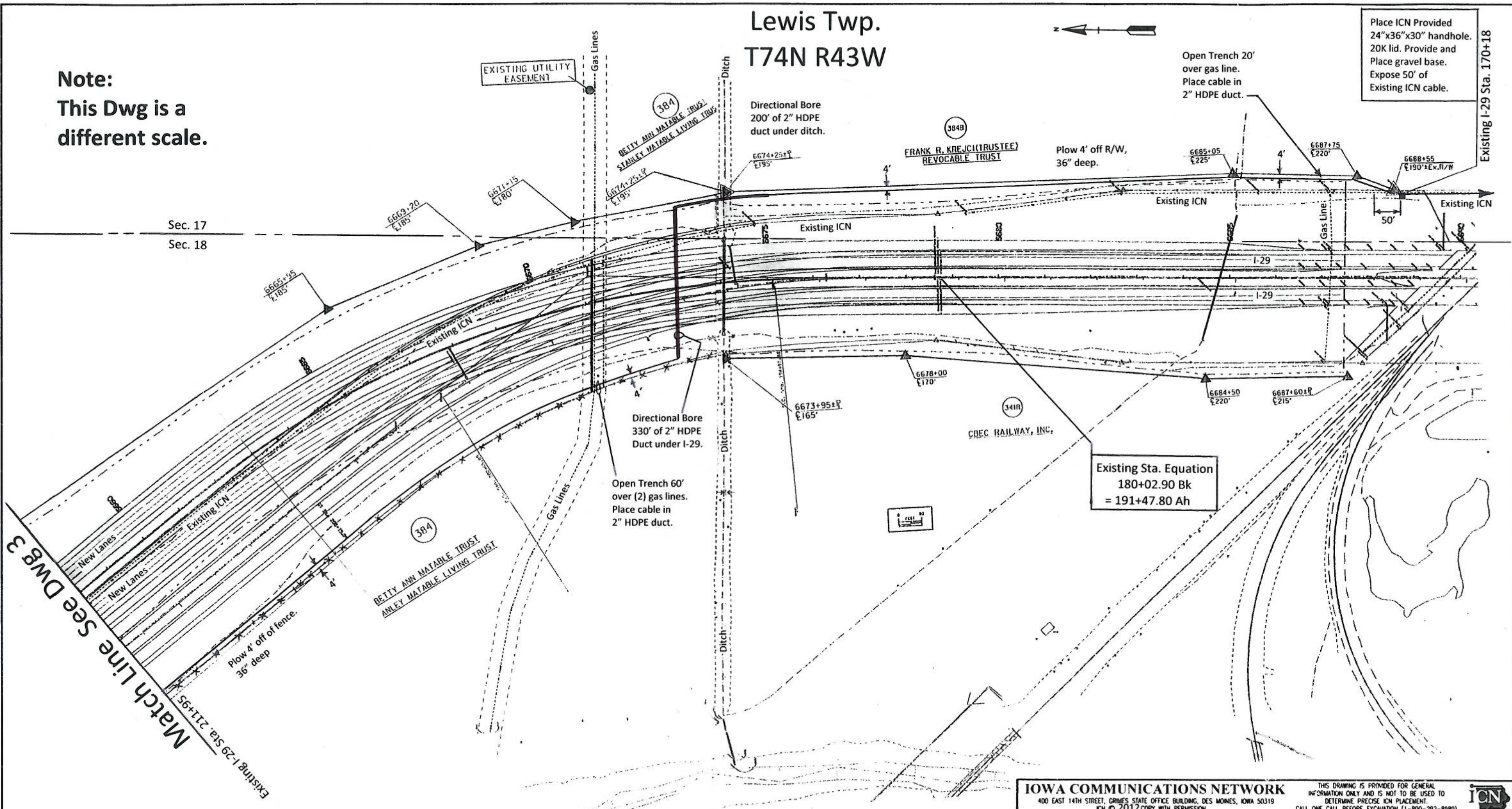


Lewis Twp.  
T74N R43W



**Note:**  
This Dwg is a  
different scale.

Place ICN Provided  
24"x36"x30" handhole.  
20K lid. Provide and  
Place gravel base.  
Expose 50' of  
Existing ICN cable.



Sec. 17  
Sec. 18

Match Line See DWG 3  
Existing I-29 Sta. 211+95

Existing Sta. Equation  
180+02.90 Bk  
= 191+47.80 Ah

**Note:**  
This Dwg is a  
different scale.

<b>IOWA COMMUNICATIONS NETWORK</b>		THIS DRAWING IS PROVIDED FOR GENERAL INFORMATION ONLY AND IS NOT TO BE USED TO DETERMINE PRECISE ICN PLACEMENT. CALL ONE CALL BEFORE EXCAVATION (1-800-292-8989)	
400 EAST 14TH STREET, GRIMS STATE OFFICE BUILDING, DES MOINES, IOWA 50319		ICN © 2012 COPY WITH PERMISSION	
1	PERMIT	4-23-12	SCALE: SIZE:
2			
3			
4			
5			
6			
7			
8			
		I-29 Relocation Council Bluffs	
		DWG 4	



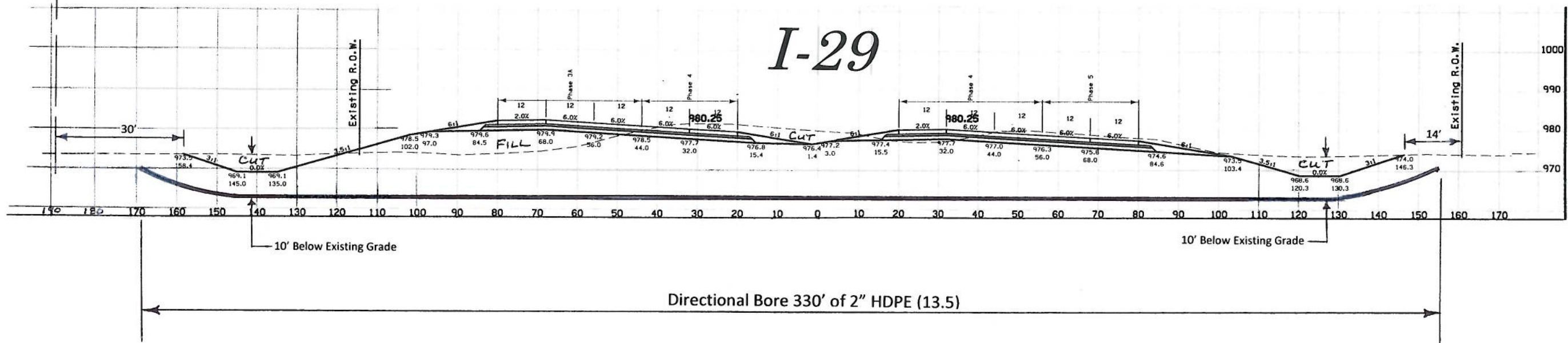
New East R.O.W.

East

6673+00.0000  
Looking South

West

# I-29



**IOWA COMMUNICATIONS NETWORK**  
 400 EAST 14TH STREET, GRIMES STATE OFFICE BUILDING, DES MOINES, IOWA 50319  
 ICN © 2012. COPY WITH PERMISSION. CALL ONE CALL BEFORE EXCAVATION (1-800-292-8989)

THIS DRAWING IS PROVIDED FOR GENERAL INFORMATION ONLY AND IS NOT TO BE USED TO DETERMINE PRECISE ICN PLACEMENT.

PERMIT 4-23-12

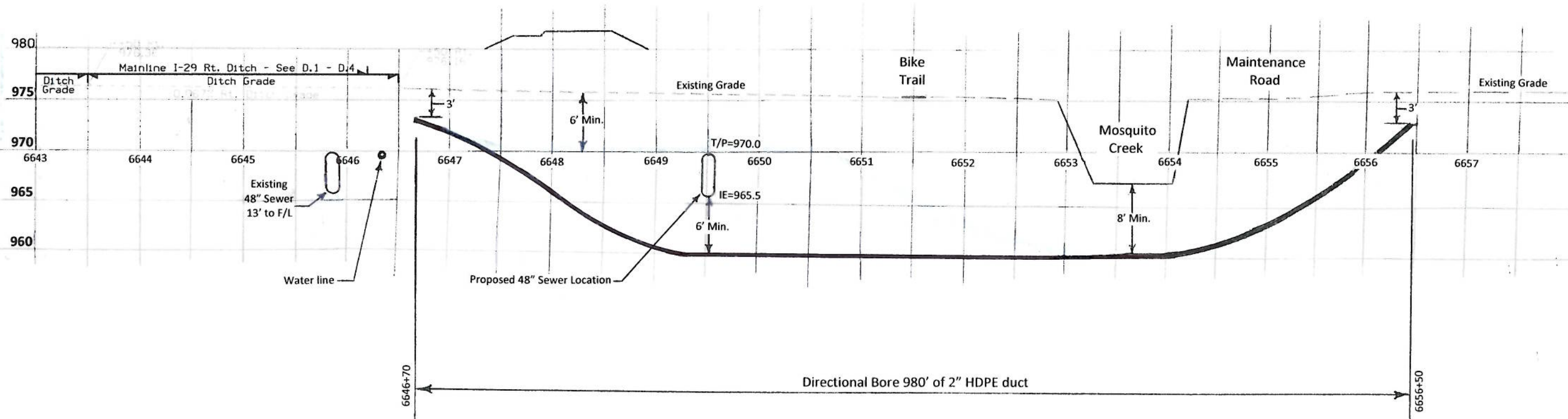
1		SCALE:	SIZE:
2			
3			
4		I-29 Relocation Council Bluffs	
5			
6		DWG	5
7			
8			

Looking East  
Profile in General

North

South

Future Railroad tracks  
(3 sets)  
@ New ICN Crossing



IOWA COMMUNICATIONS NETWORK		THIS DRAWING IS PROVIDED FOR GENERAL INFORMATION ONLY AND IS NOT TO BE USED TO DETERMINE PRECISE ION PLACEMENT. CALL ONE CALL BEFORE EXCAVATION (1-800-292-8989)	
400 EAST 14TH STREET, GRIMES STATE OFFICE BUILDING, DES MOINES, IOWA 50319		KEN © 2011, COPY WITH PERMISSION	
1	PERMIT	4-23-12	SCALE: 5" = 1'
2	DWG REVISED	5-21-12	
3			
4			
5			
6			
7			
8			
<b>I-29 Relocation Council Bluffs</b>			
Date: 6			